



1933

CONTENTS: JUNE ISSUE

Follow this and additional works at: <http://digitalcommons.law.yale.edu/ylj>

Recommended Citation

CONTENTS: JUNE ISSUE, 42 *Yale L.J.* (1933).

Available at: <http://digitalcommons.law.yale.edu/ylj/vol42/iss1/9>

This Article is brought to you for free and open access by Yale Law School Legal Scholarship Repository. It has been accepted for inclusion in *Yale Law Journal* by an authorized editor of Yale Law School Legal Scholarship Repository. For more information, please contact julian.aiken@yale.edu.

YALE LAW JOURNAL

VOL. XLII

JUNE, 1933

No. 8

CONTENTS

LEADING ARTICLES

UNCONTROLLED EXPANSION IN THE LIGHT AND POWER INDUSTRY <i>Richard Joyce Smith</i>	1153
THE POWER OF FEDERAL COURTS TO ENJOIN PROCEEDINGS IN STATE COURTS <i>Telford Taylor and Everett I. Willis</i>	1169
LEGAL AND INSTITUTIONAL METHODS APPLIED TO ORDERS TO STOP PAYMENT OF CHECKS <i>Underhill Moore, Gilbert Sussman and C. E. Brand</i>	1198

COMMENTS

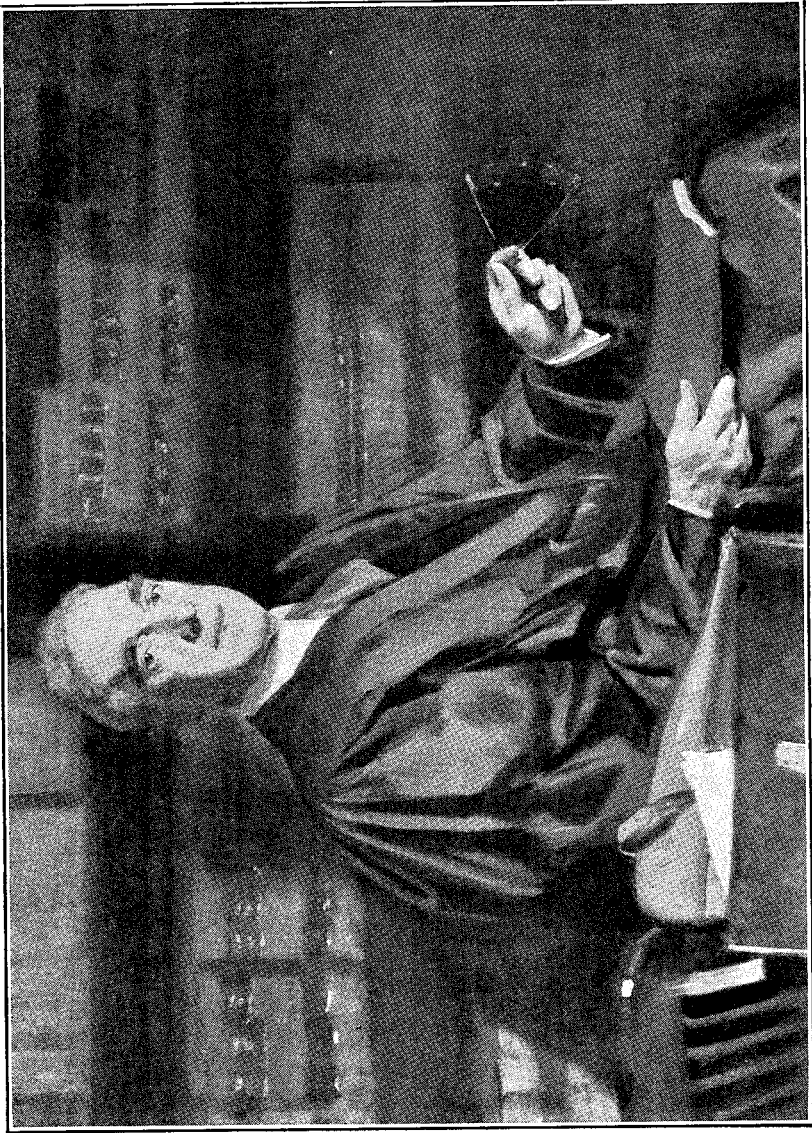
Recent Legislation for the Relief of Mortgage Debtors	1236	Constitutionality of the New York Minimum Wage Law	1250
Appointment of Receivers for Labor Unions	1244	Legislative Regulation of the New York Dairy Industry	1259

NOTES

Repudiation by Supreme Court of Rule of <i>Coolidge v. Long</i> in Inheritance Taxation	1271
Scope of Federal Radio Commission's Power over Licenses	1274
Validity of Federal Estate Tax on Securities Owned by Non-Resident Alien	1277
Construction of Deed Alleged to Create Defeasible Estate	1279
Power of a Surety Company to Limit its Liability on a Depositary Bond	1281
Execution of Replevin Judgment in the Alternative for Possession of Chattel or its Value	1283
Allocation of Loss for Tax Purposes When Building is Demolished Under Terms of Lease	1286
Applicability of Substituted Service of Process Statutes to Federal Corporations	1287
Validity of Trusts in Favor of Animals	1290

BOOK REVIEWS

Clark: <i>Boycotts and Peace</i>	} <i>John Bassett Moore</i>	1294
Hindmarsh: <i>Force in Peace</i>		
Roddie: <i>Peace Patrol</i>		
Clark: <i>Cases on Pleading and Procedure. Volume II</i>	<i>Thomas E. Atkinson</i>	1297
Glanvill: <i>De Legibus et Consuetudinibus Regni Angliae</i> (edited by George E. Woodbine)	<i>Sydney K. Mitchell</i>	1299
Hall: <i>Select Cases on the Law Merchant</i>	<i>George E. Woodbine</i>	1300
Medical Care for the American People	<i>Milton C. Winternitz</i>	1302



THOMAS WALTER SWAN, YALE B. A. 1900, M. A. 1916
Professor of Law and Dean of the Yale School
of Law 1916-1927

Judge of U. S. Circuit Court of Appeals,
Second Circuit, 1927—.

Painted in 1932 by Charles Sidney Hopkinson

Presented to the Yale School of Law by former students and other friends,
June 20, 1932.